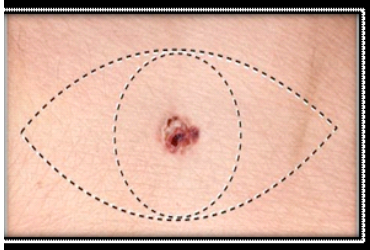


USER GUIDE



SYSTEM INCLUDES:

Sterile Single Use – 1 ExiClip Device , 1 Skin Hook and 1 Removal Tool

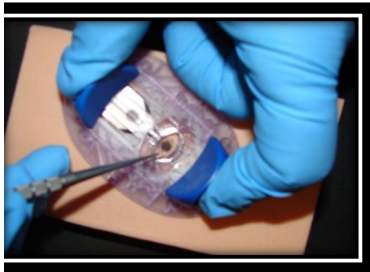


1. Prepare Lesion Site

- a. Clean and apply local anesthetic to lesion site as you would for normal excisional skin biopsy sample.

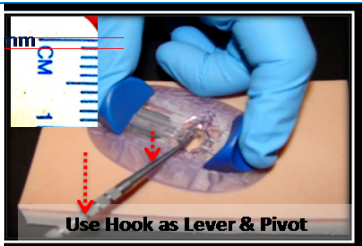


2. REMOVE PLASTIC SAFETY LOCKING CLIP ON BLADE SIDE GRIP



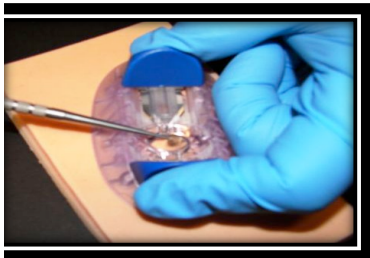
3. Place ExiClip™ Aperture Over Skin Lesion

- a. Place the device over the skin lesion to be removed. For best cosmetic results, the long axis of the aperture is aligned with the natural skin folds. Visually center the lesion in the elliptical aperture of the device.
- b. Position thumb on blade side grip, index finger on opposite grip and anchor middle finger on side of device.



4. Engage Skin Hook

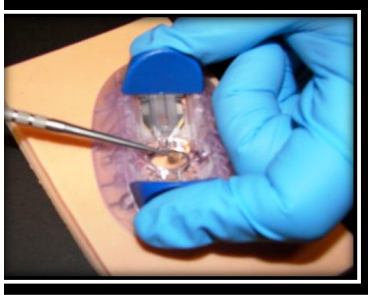
- a. With a sterile “L” shaped skin hook, engage the skin hook tip to the side of the lesion, penetrate the skin and turn the tip under the lesion. This will firmly seat the skin hook in place.



5. Lever & Lift

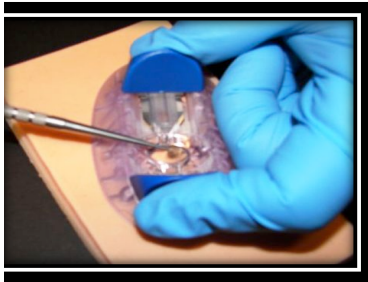
- a. Using the ExiClip as a lever fulcrum lay the skin hook over the device and lift the skin through the aperture.
- b. Visually confirm the lesion is above the plane of the aperture – you should be able to see at least 1mm of “clean” skin around the lesion to ensure appropriate margins.

USER GUIDE



6. Squeeze Firmly – Clip - Confirm

- a. With thumb on blade side grip and index finger on opposite side grip, **depress small round button on blade side grip** while squeezing both grips together. The initial force will quickly release setting the ExiClip securely in the skin while simultaneously releasing the blade to excise the tissue.
- b. Pinch both grips to complete the skin clip and hold for 2 seconds. The biopsy sample will remain on the skin hook until you deposit it into your lab vial.
- c. Confirm you have a clean linear closure by looking through aperture. If in doubt there is linear closure, re-pinch the finger grips again before you proceed to the next step.



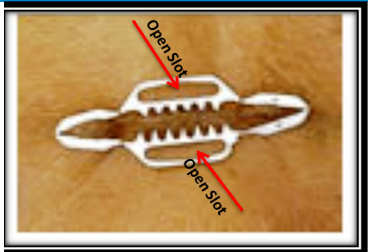
7. Remove Device & Lift

- a. To lift/remove the ExiClip from the patient, simply pull the finger grips apart about 1/4 inch to the built in stop position.
- b. Lift the device vertically from the patient, leaving the skin clip securely in place. **DO NOT TWIST OR ROTATE.**
- c. Store biopsy sample that remains on skin hook in a lab vial for pathology analysis.

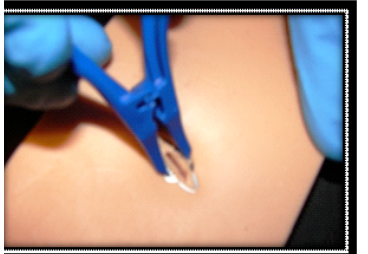


8. Dress the Site

- a. Dress the biopsy wound with a thin film of antibiotic ointment (bacitracin, polysprin, mupirocin) or petrolatum. Dress with a bandage or Steri-Strip™.
- b. Provide your patient with an ExiClip Patient Care Guide. Bathing is permitted after 12 - 24 hours.



REMOVING THE SKIN CLIP



1. Place the tips of the removal tool into the open slots on the skin clip
2. Gently squeeze the removal tool, opening the skin clip. **DO NOT TWIST!**
3. Carefully lift the skin clip with small side to side motion to release the tines from the healed tissue.